

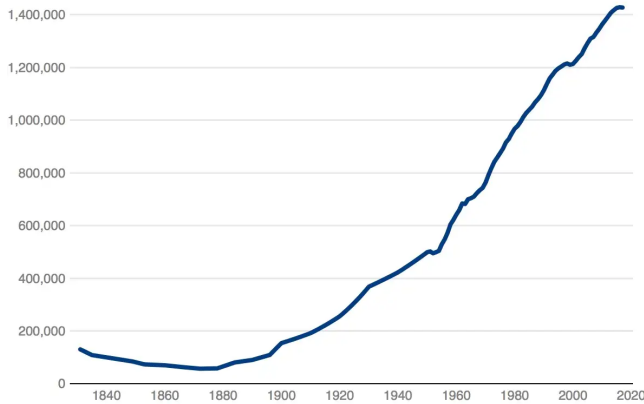
# The Hawai'i Pub - Friday, January 13th, 2023

The print at home daily newspaper for residents of Honolulu, Hawai'i.

## Chart of the day

### Population of Hawaii

Kingdom of Hawaii Census Records, Decennial U.S. Census Records, Census Annual Population Estimates, linear interpolations between records



A chart of the population of Hawai'i found in Lyman Stone's *Will Hawaii Be the Next Puerto Rico?*

## Word of the day

**Hauhau** - v. 1. To lay stones in a wall. 2. To build with stones.

## University News

- Commercial truck driver training at Leeward CC on a roll

## Jobs

558 new jobs on [Indeed.com](#) including Deli Bakery Associate \$19hr and Regal Cinemas Floor Staff \$15hr

163 new jobs on [craigslist](#) including Senior Audit Accountant \$95k

## Housing

27 new rental listings on [HotPads](#) including: \$5,500 for 4BR on Kuliouou

## Restaurants

Google lists 21 [restaurants with 4.5+ rating](#) including: [Beach House](#) by Roy Yamaguchi and [Marugame Udon](#)

## Airport @DOTHawaii

200+ planes [arriving](#) into HNL today

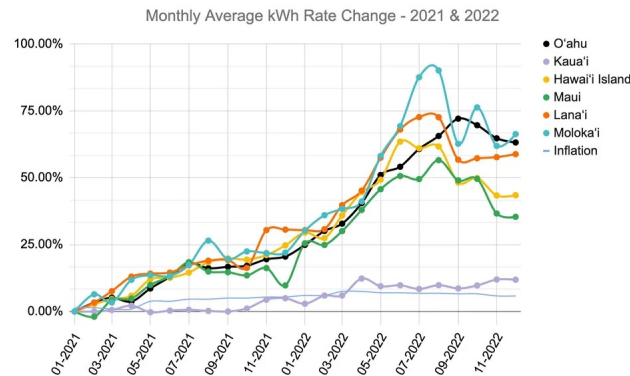
## Hawai'i Department of Education @HIDOE808

No school January 16th for MLK day

## Libraries @hsplshigov

There are 10 events this week in Oahu on the [Library calendar](#)

## Subreddits - Oahu - Honolulu - Hawaii



Posts yesterday included [Hawaii's energy rate increases over the past two years](#) (22 upvotes).

## Police @honolulupolice

30 arrests in the 1-12-2023 [arrest logs](#).

## Weather

- ☀ Today: Sunny, with a high near 82. Light and variable wind becoming south 5 to 9 mph in the afternoon.
- 🌤 Tonight: Widespread haze after 8pm. Clear, with a low around 67. Southeast wind around 7 mph becoming east northeast in the evening.
- ☁ Tomorrow: Isolated showers after noon. Widespread haze. Sunny, with a high near 82. Light and variable wind becoming south 5 to 9 mph in the afternoon. Chance of precipitation is 20%.
- 🌤 Tomorrow Night: Widespread haze before midnight. Partly cloudy, with a low around 73. East northeast wind 5 to 13 mph.

## 🏄🏄🏄 Surf Report 🏄🏄🏄

A large north swell is on the downward trend today although still in High Surf Advisory (HSA) criteria. Large surf will persist for most north and west facing shores through the weekend as another powerful long period northwest (310 degrees) swell is expected to rise Saturday and hold through Sunday.

Shore	AM(ft)	PM(ft)
North	18-24	15-20
West	10-14	8-12
South	1-3	1-3
East	2-4	2-4

## Have a great Friday!

by [Breck Yunits - Editor](#)

Email [subscribe@hawaii.pub](mailto:subscribe@hawaii.pub) to receive these PDFs in your email  
On the web: [hawaii.pub/1-13-2023.html](http://hawaii.pub/1-13-2023.html).